



Globe View, 10 High Timber Street, EC4V 3PS  
£3,650 PCM

**coopers**  
OF LONDON EST. 1986



# Globe View, 10 High Timber Street, EC4V

- Two bed, two bath apartment
- Top floor
- Split level
- Warehouse conversion
- Exposed beams
- River views
- Concierge
- Parking Space

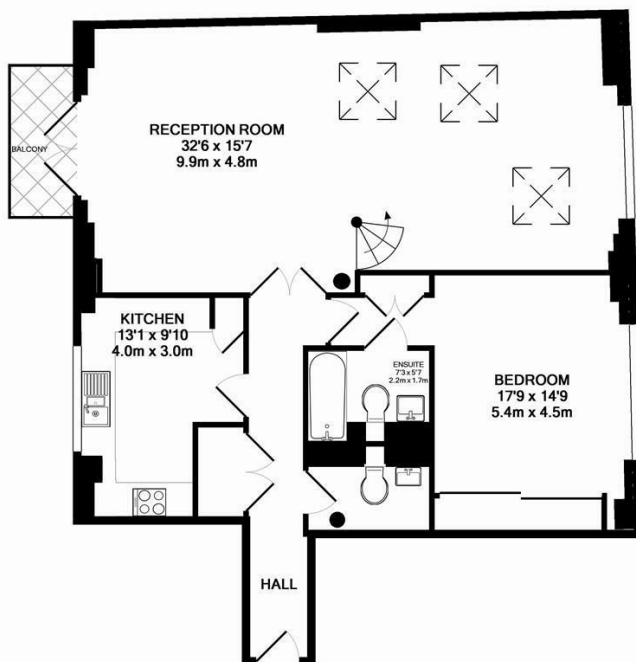
A large two bedroom, two bathroom apartment arranged over 1300 sq ft on the top floor of a converted warehouse.

Features include a large living room with views towards the Thames, high ceilings with exposed beams and a mezzanine level.

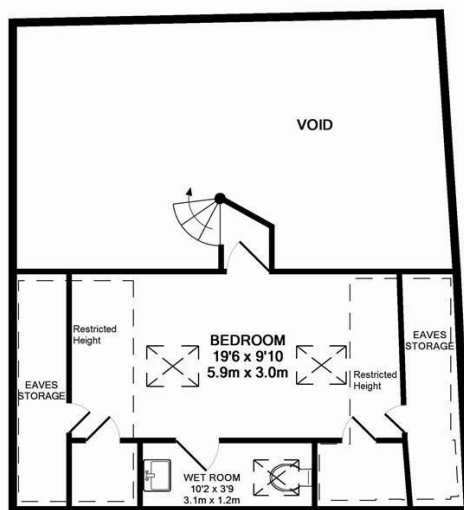






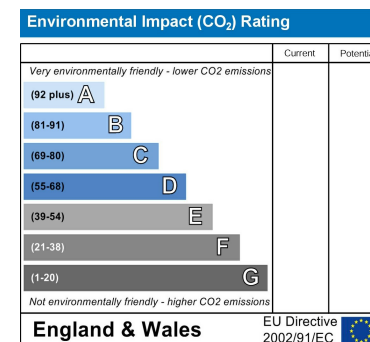
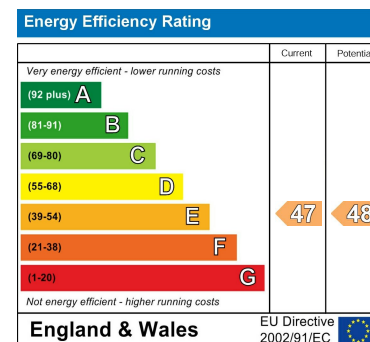


6TH FLOOR



7TH FLOOR

GLOBE VIEW EC4  
TOTAL APPROX. FLOOR AREA 1321 SQ.FT. (122.7 SQ.M.)  
(Excludes Eaves Storage)



## Viewing

Strictly by appointment with:  
Coopers of London, 22 Cleveland Street,  
Fitzrovia, London W1T 4JB  
[info@coopersonlondon.co.uk](mailto:info@coopersonlondon.co.uk)

**0207 580 9658**

These particulars, whilst believed to be accurate are set out as a general outline only for guidance and do not constitute any part of an offer or contract. Intending purchasers should not rely on them as statements or representation of fact, but must satisfy themselves by inspection or otherwise as to their accuracy. No person in this firm's employment has the authority to make or give any representation or warranty in respect of the property.